

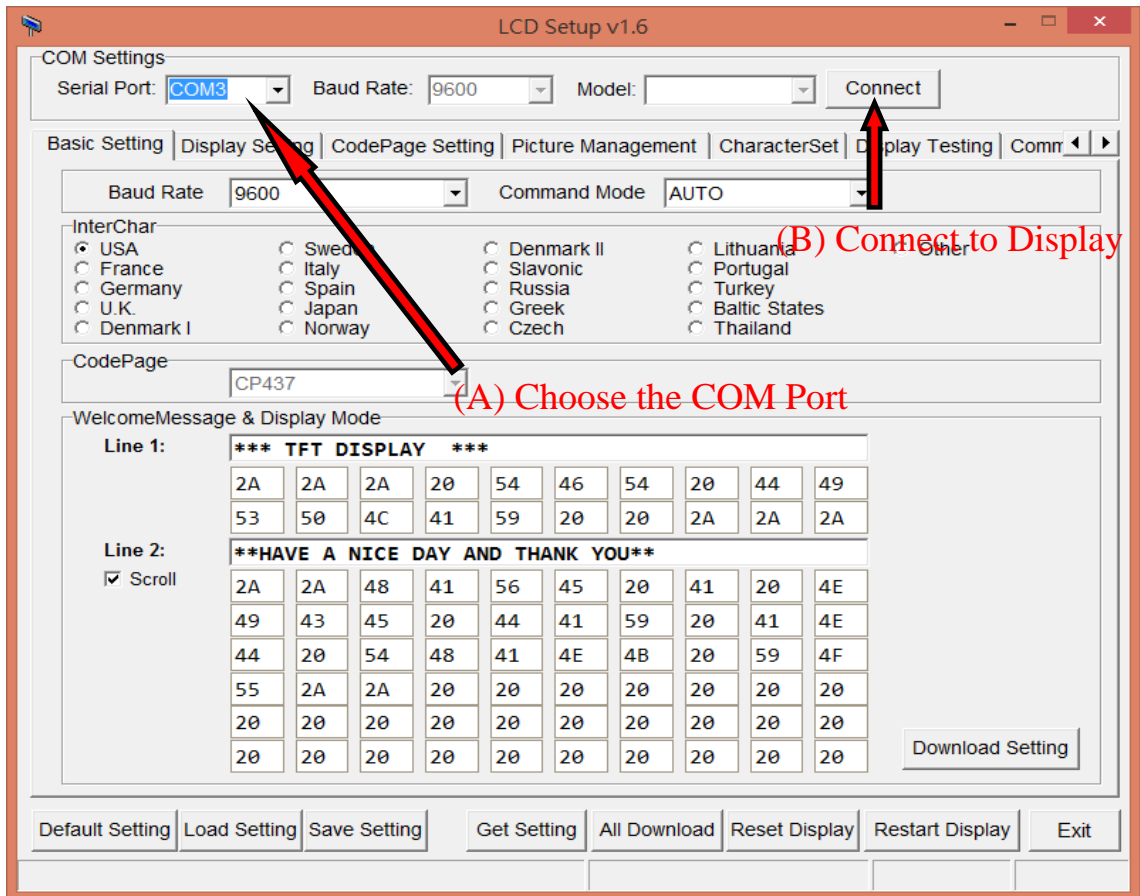
User Manual For LCD Setup

Version : 1.6

Table of Contents

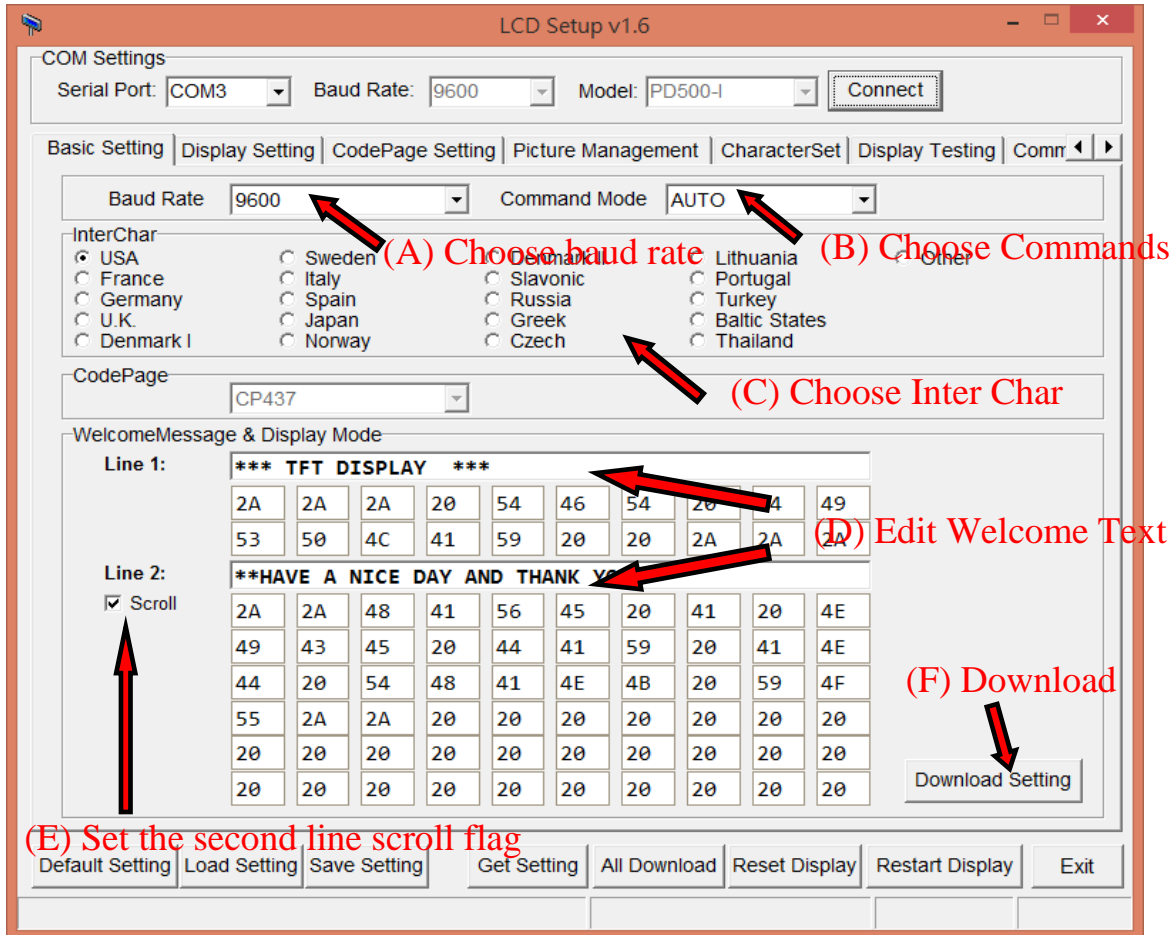
1.	Connect to Display	3
2.	Download Basic Settings	4
3.	Download Display Settings.....	5
	1) Boot Logo Setting	5
	2) Main Logo Setting	8
	3) Main Title Setting	9
	4) Main Body Setting	10
	5) Main Bottom Message Setting.....	11
	6) Download Font file	12
4.	Inter Char and Codepage Setting	14
5.	Display Testing	15
6.	Command Send.....	16
7.	Configuration and Parameter maintenance	17
8.	Device Operations.....	18

1. Connect to Display



- Select the Com port, which the display is connected to.
- Click on the **Connect button** to connect to the display.

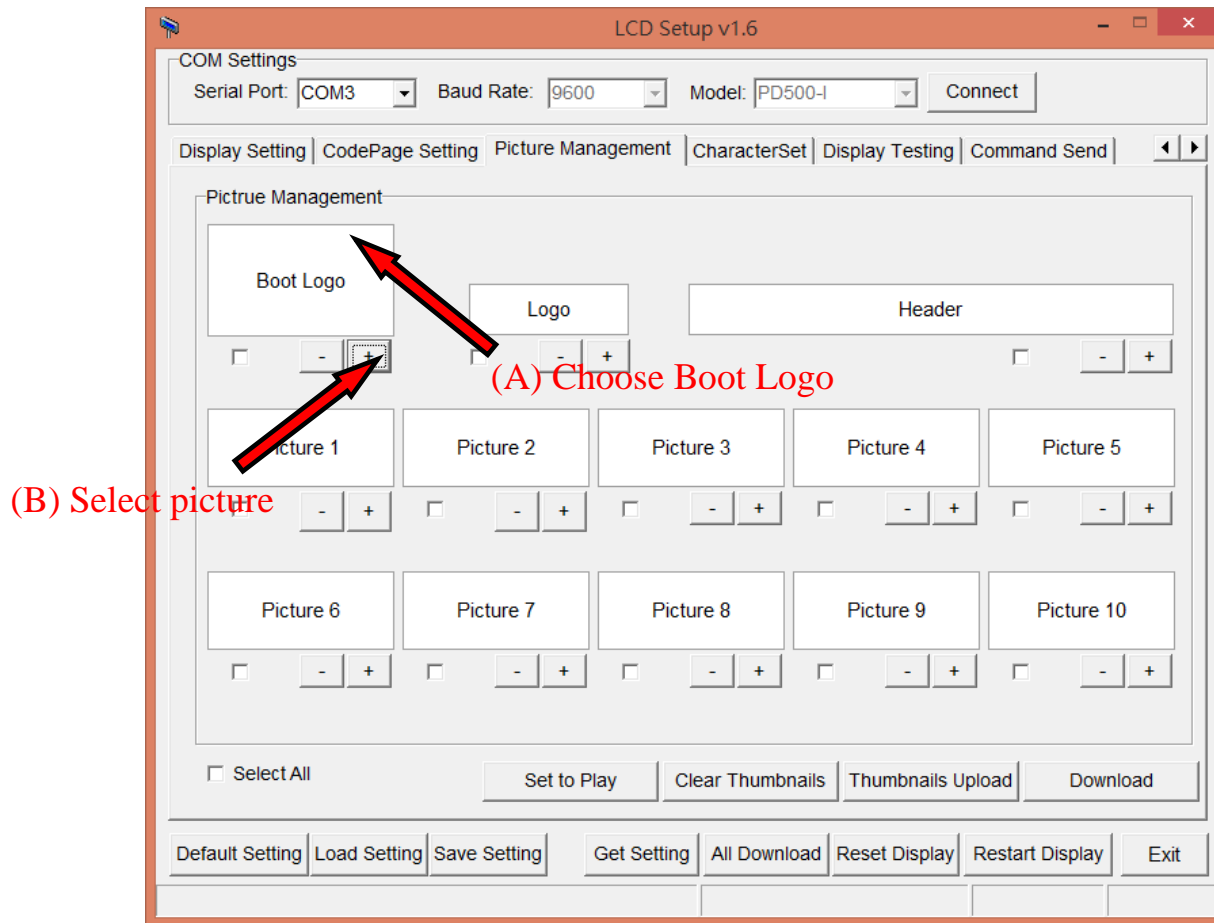
2. Download Basic Settings



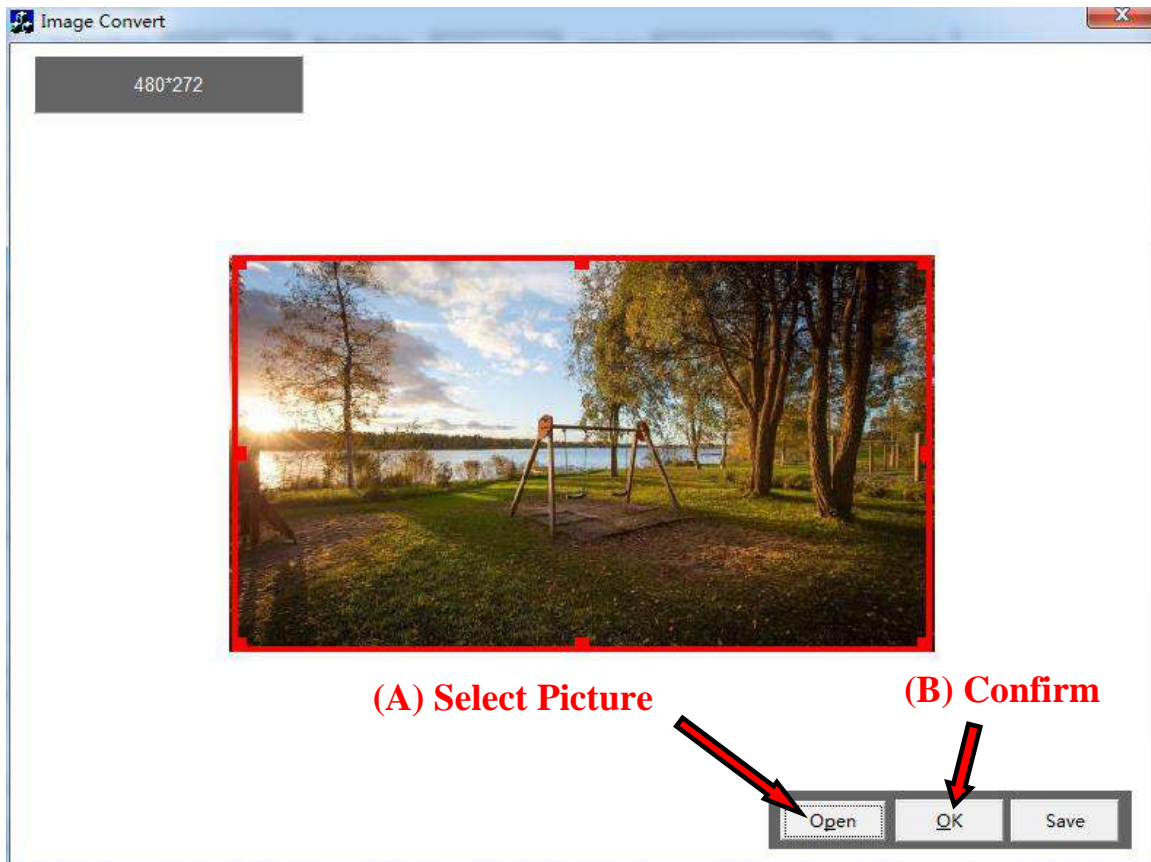
- Select baud rate.
- Select Commands set.
- Select Inter Char.
- Edit Welcome Text. **Line 1 Length 20, Line 2 Length 60.**
- Set the second line scrolls or not.
- Click on **Download Setting button** to download settings to the display.

3. Download Display Settings

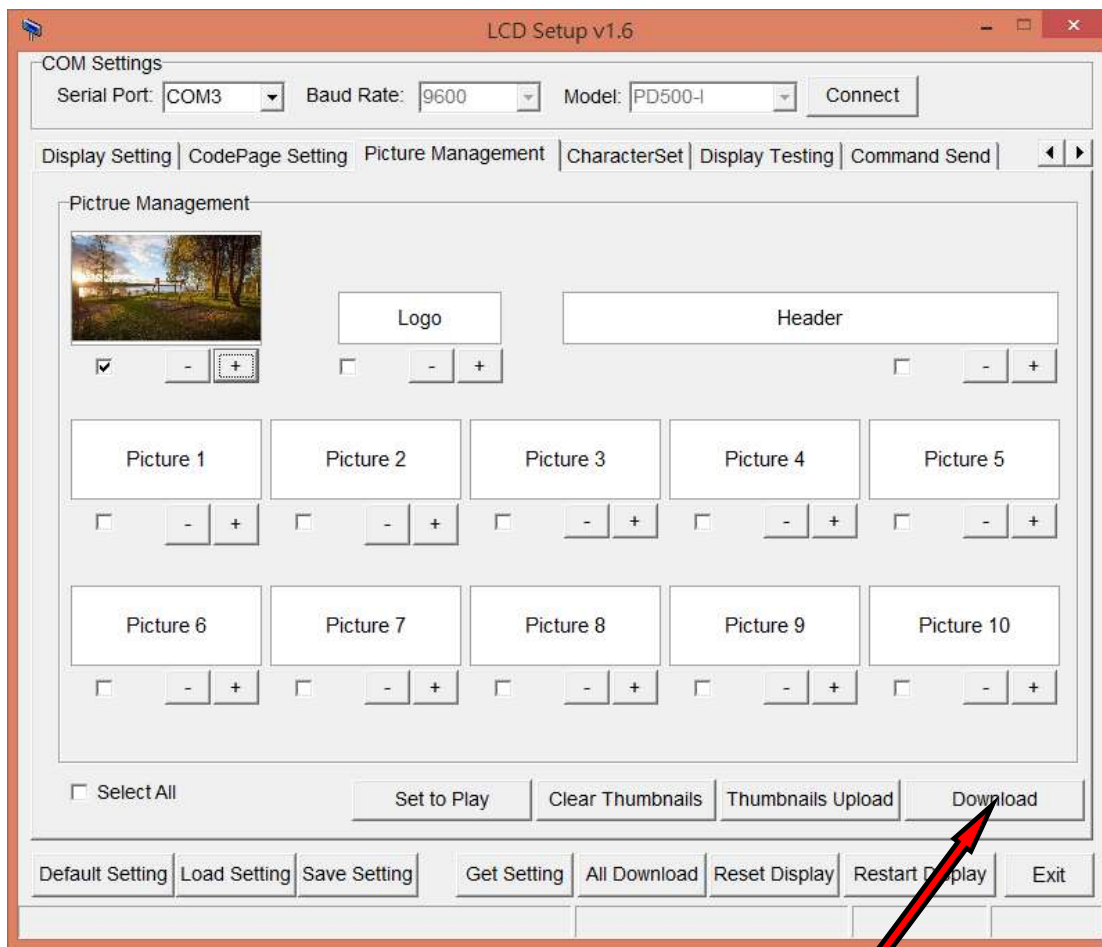
1) Boot Logo Setting



- Click on the **Boot Logo** radio button.
- Click on the **Select picture button** to Select Picture.



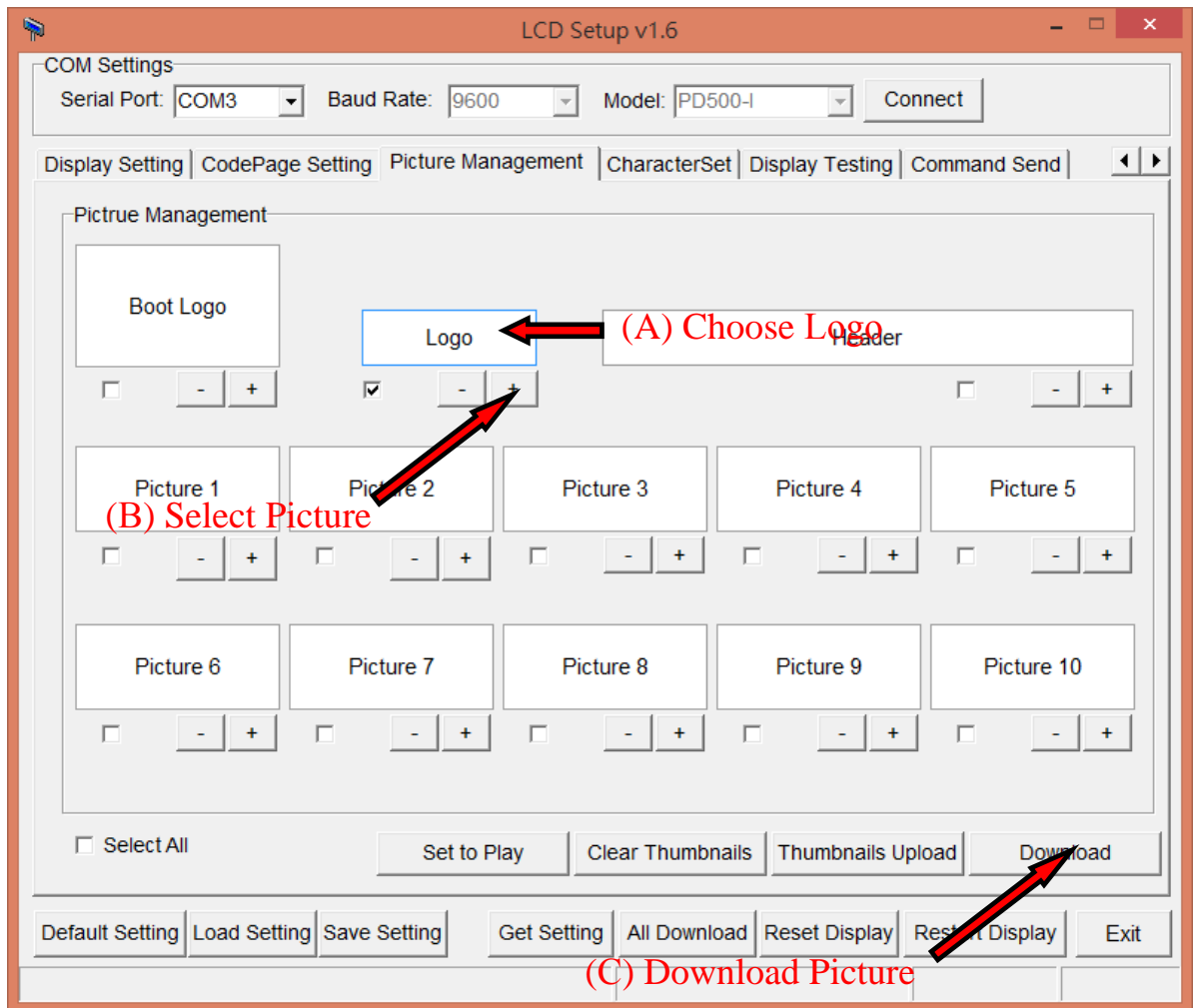
- a) Click on the **Open button** to Select the Picture and open it.
- b) Use the checkbox to select the appropriate range.
- c) Click on the **OK button** to continue.



(A) Download

- a) Click on the **Download Picture button** to download to the display.

2) Main Logo Setting



- Click on the **Logo** panel.
- Click on the **Select picture button** to Select Picture.
- Click on the **Download picture button** to download to the display.

3) Main Title Setting (TEXT Mode)

The screenshot shows the 'LCD Setup v1.6' window. The 'Display Setting' tab is active. Red arrows and text labels point to specific settings:

- (A) Set Text Color:** Points to the 'Text Color' dropdown in the 'Header' section.
- (B) Set Background Color:** Points to the 'Background Color' dropdown in the 'Header' section.
- (C) Select Show Text or Show picture:** Points to the 'Show Text' and 'Show Picture' radio buttons in the 'Header' section.
- (D) Set Text:** Points to the 'Text' section, specifically the 'Text Line 2' and 'Text Line 4' input fields.

The 'Text' section shows the following text lines:

```

*** TFT DISPLAY ***
HAVE A NICE DAY!
*** TFT DISPLAY ***
HAVE A NICE DAY!
  
```

The 'Footer Message' section shows:

```

Text Color: [Blue]
Background Color: [White]
  
```

The 'Brightness adjustment' section shows:

```

20% 40% 60% 100%
  
```

The bottom of the window shows buttons: Default Setting, Load Setting, Save Setting, Get Setting, All Download, Reset Display, Restart Display, Exit.

Below the main window, a 'WelcomeMessage & Display Mode' window is shown. It displays the text for 'Line 1' and 'Line 2' in a grid format. A red arrow points to the 'Line 1' text:

```

Line 1: *** TFT DISPLAY ***
2A 2A 2A 20 54 46 54 20 44 49
53 50 4C 41 59 20 20 2A 2A 2A
  
```

The 'Line 2' text is:

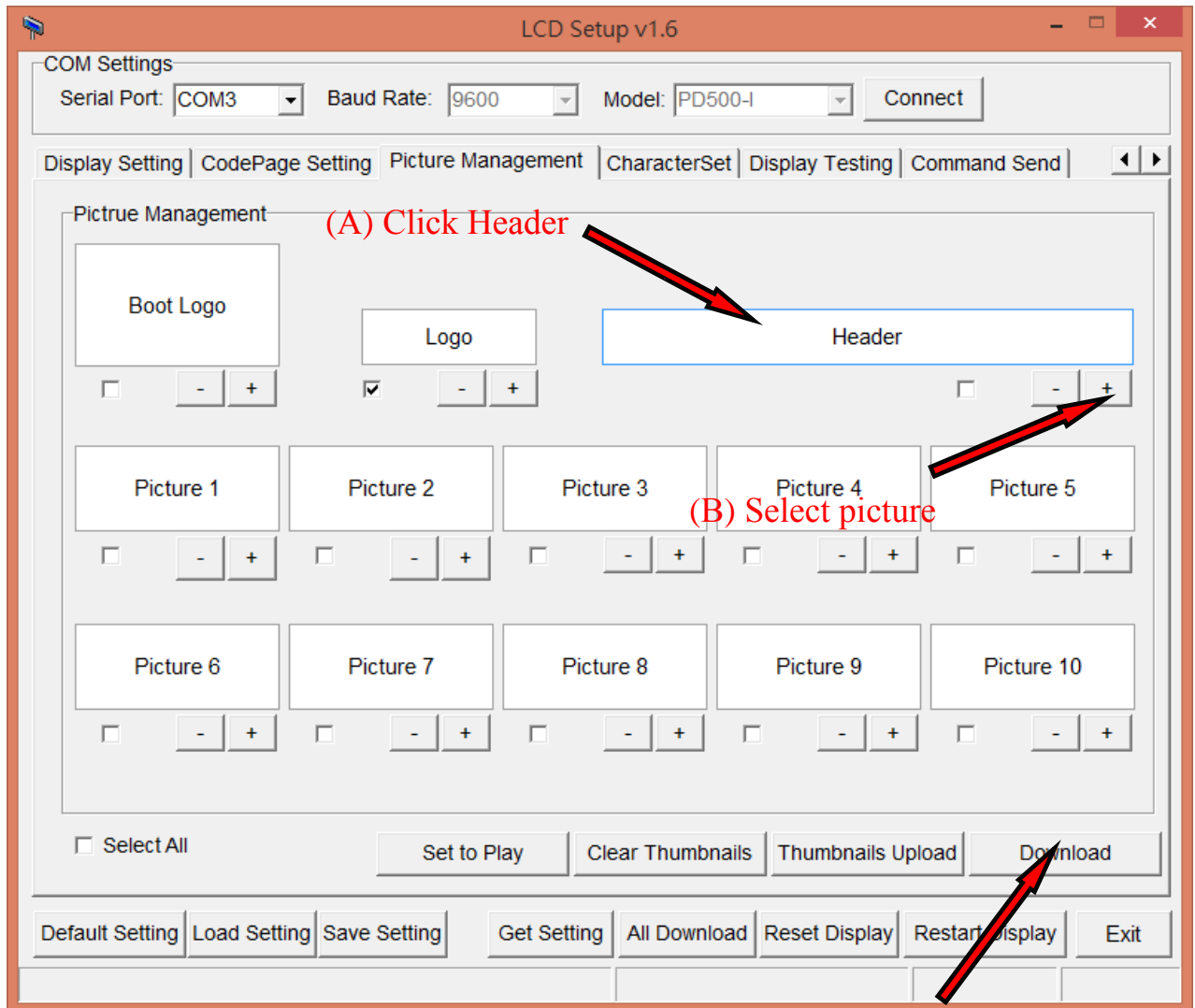
```

**HAVE A NICE DAY AND THANK YOU**
2A 2A 48 41 56 45 20 41 20 4E
49 43 45 20 44 41 59 20 41 4E
44 20 54 48 41 4E 4B 20 59 4F
55 2A 2A 20 20 20 20 20 20 20
20 20 20 20 20 20 20 20 20 20
20 20 20 20 20 20 20 20 20 20
  
```

A 'Download Setting' button is located at the bottom right of the 'WelcomeMessage & Display Mode' window.

- Set Text Color
- Set Background Color
- Select Show Text or Show picture
- Set Text

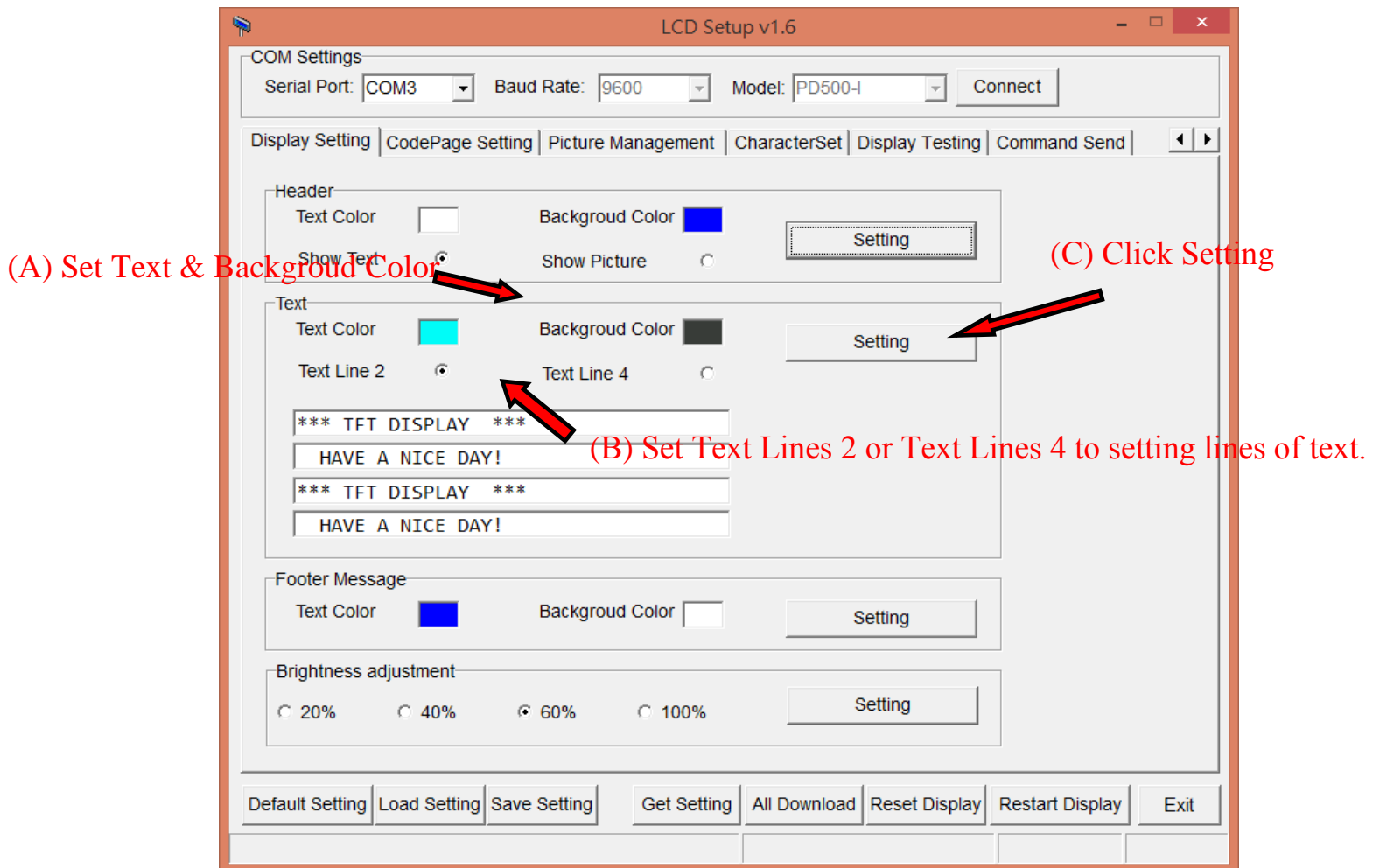
3) Main Title Setting (Picture Mode)



(C) Click Download

- a) Click Header
- b) Select picture
- c) Click Download

4) Main Body Setting



- a) Set Text & Background Color
- b) Set Text Lines 2 or Text Lines 4 to setting lines of text.
- c) Click Setting

5) Main Bottom Message Setting

COM Settings

Serial Port: Baud Rate: Model:

Basic Setting | Display Setting | CodePage Setting | Picture Management | CharacterSet | Display Testing | Comm

Header

Text Color Background Color

Show Text ☒ Show Picture ☐

Text

Text Color Background Color

Text Line 2 ☒ Text Line 4 ☐

*** TFT DISPLAY ***

HAVE A NICE DAY!

*** TFT DISPLAY ***

HAVE A NICE DAY!

Footer Message

Text Color Background Color

Brightness adjustment

☒ 20% ☐ 40% ☐ 60% ☐ 100%

Default Setting | Load Setting | Save Setting | Get Setting | All Download | Reset Display | Restart Display | Exit

(A) Set Text & Background Color

(B) Click Setting

WelcomeMessage & Display Mode

Line 1: *** TFT DISPLAY ***

2A	2A	2A	20	54	46	54	20	44	49
53	50	4C	41	59	20	20	2A	2A	2A

Line 2: **HAVE A NICE DAY AND THANK YOU**

☒ Scroll

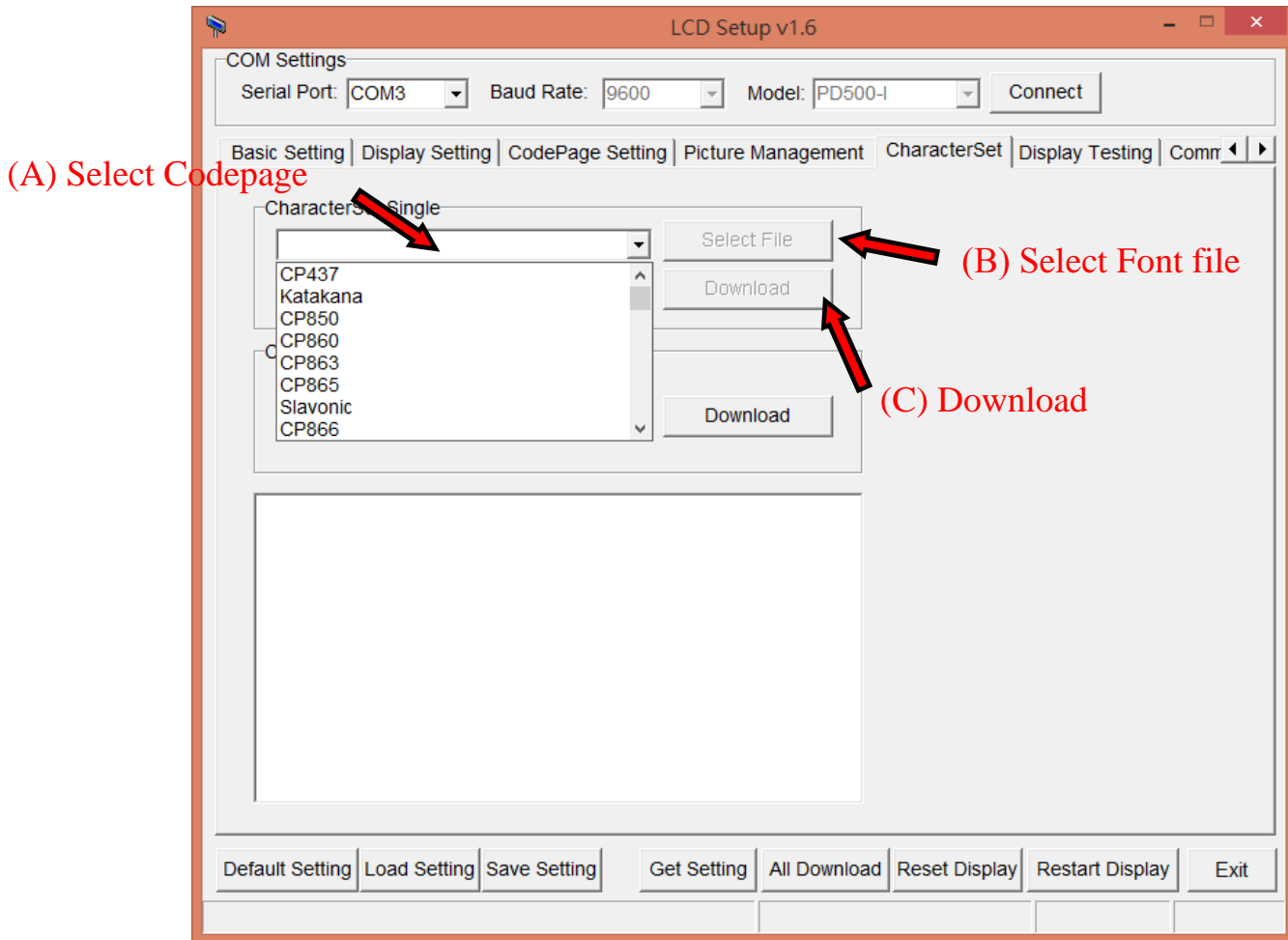
2A	2A	48	41	56	45	20	41	20	4E
49	43	45	20	44	41	59	20	41	4E
44	20	54	48	41	4E	4B	20	59	4F
55	2A	2A	20	20	20	20	20	20	20
20	20	20	20	20	20	20	20	20	20
20	20	20	20	20	20	20	20	20	20

(C) Set Text

(D) Download Setting

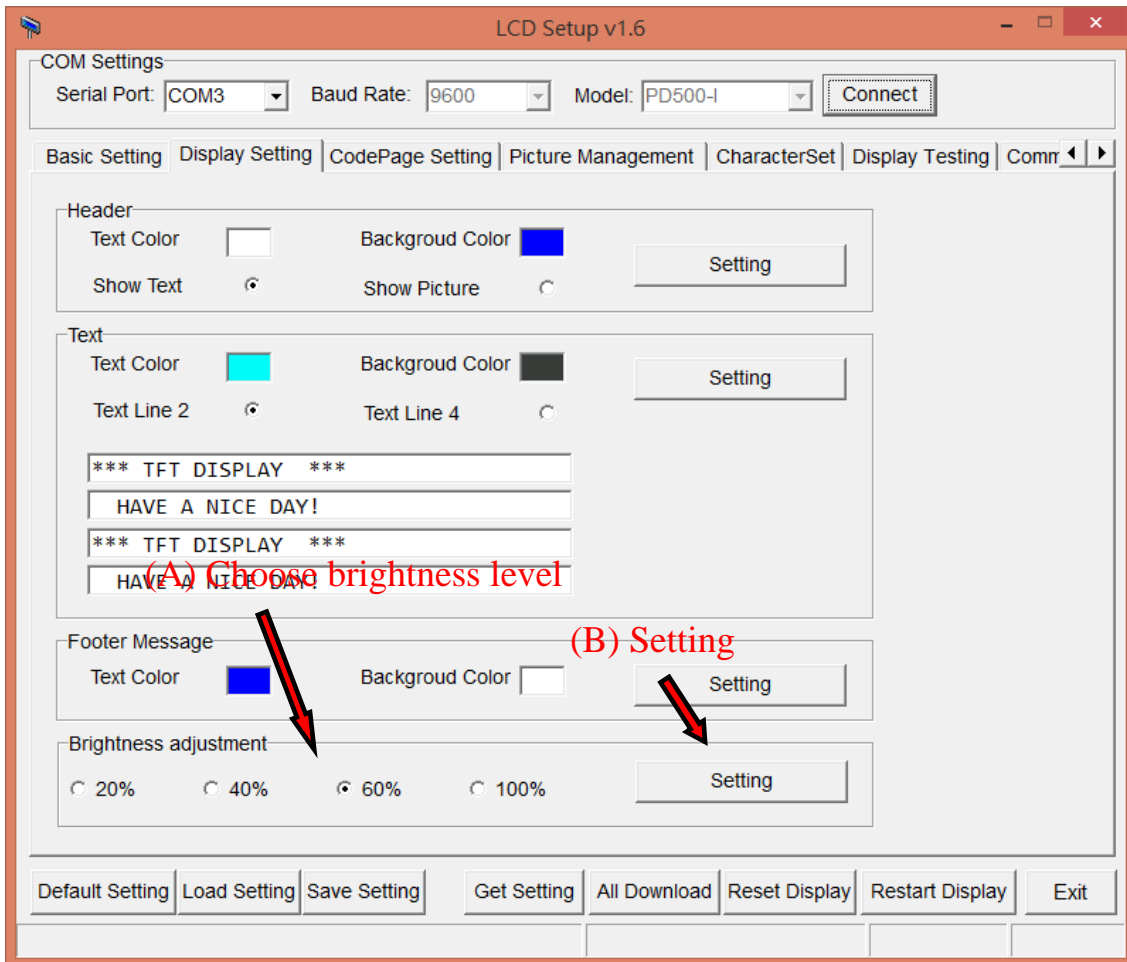
- Set Text & Background Color
- Click Setting
- Set Text
- Download Setting

6) Download Font file



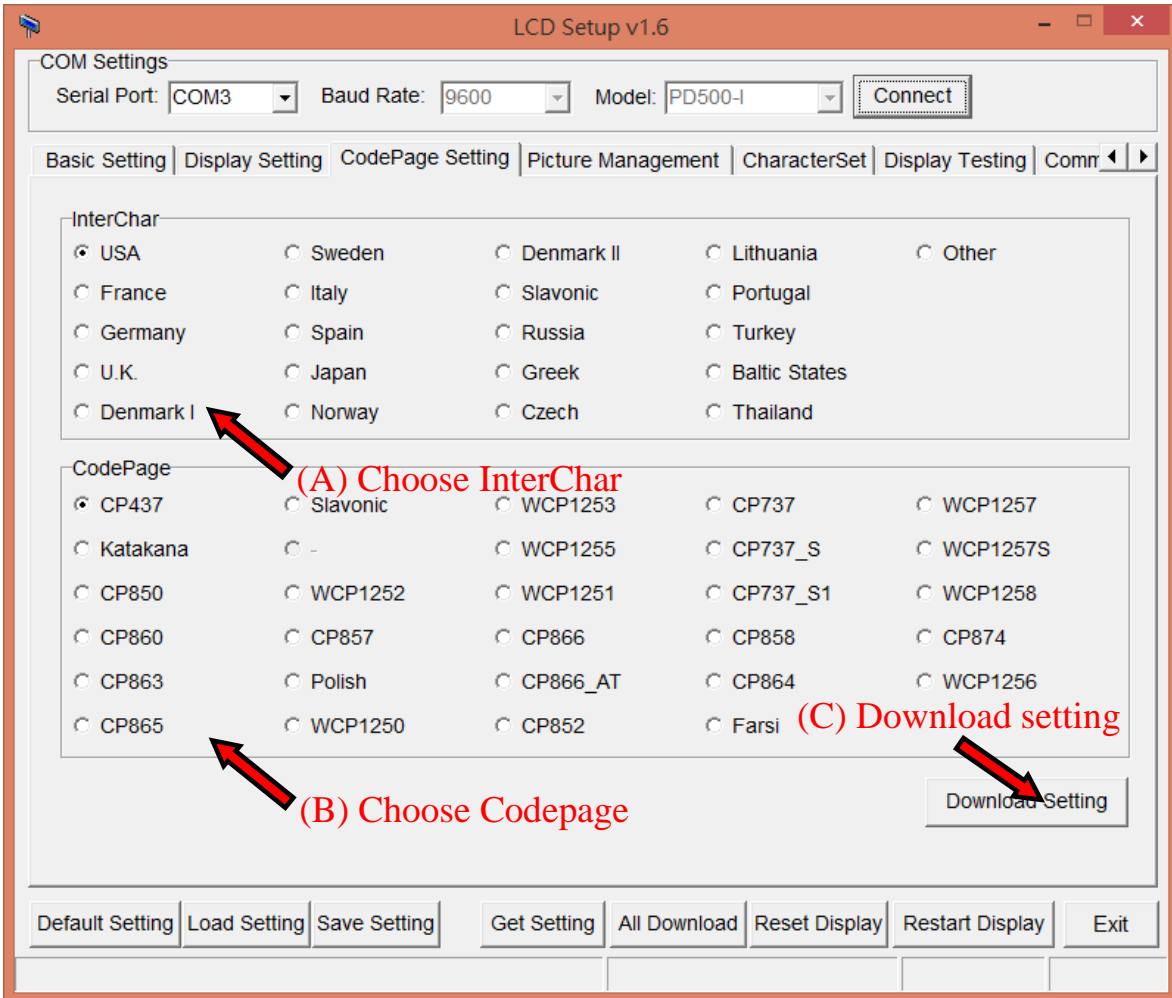
- Charset — Select the **Codepage**.
- Click on the **Select file button** Select Font file.
- Click on the **Download Charset button** to download to the display.

7) Brightness adjustment



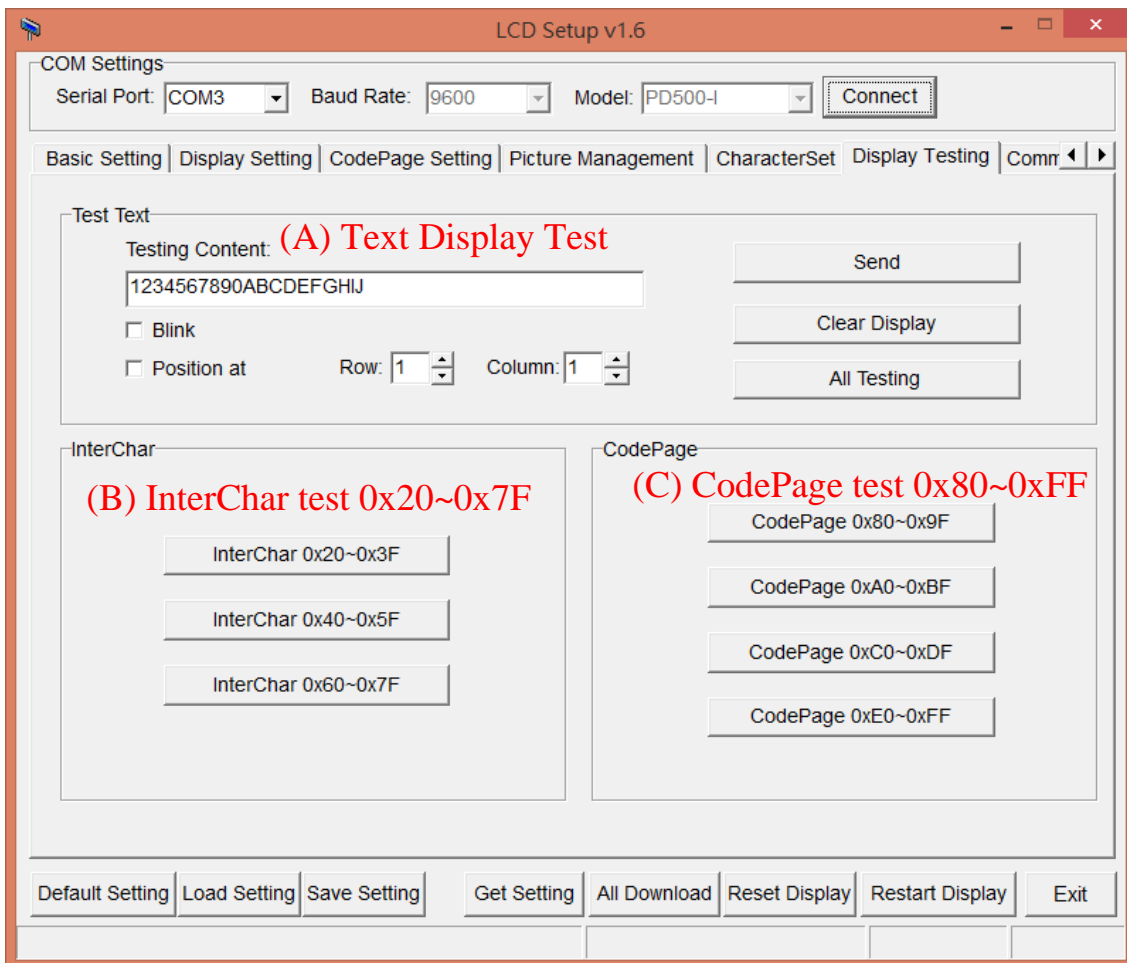
- Click on the radio button **Choose the brightness level**.
- Click on the **Setting** button to download to the display.

4. Inter Char and Codepage Setting



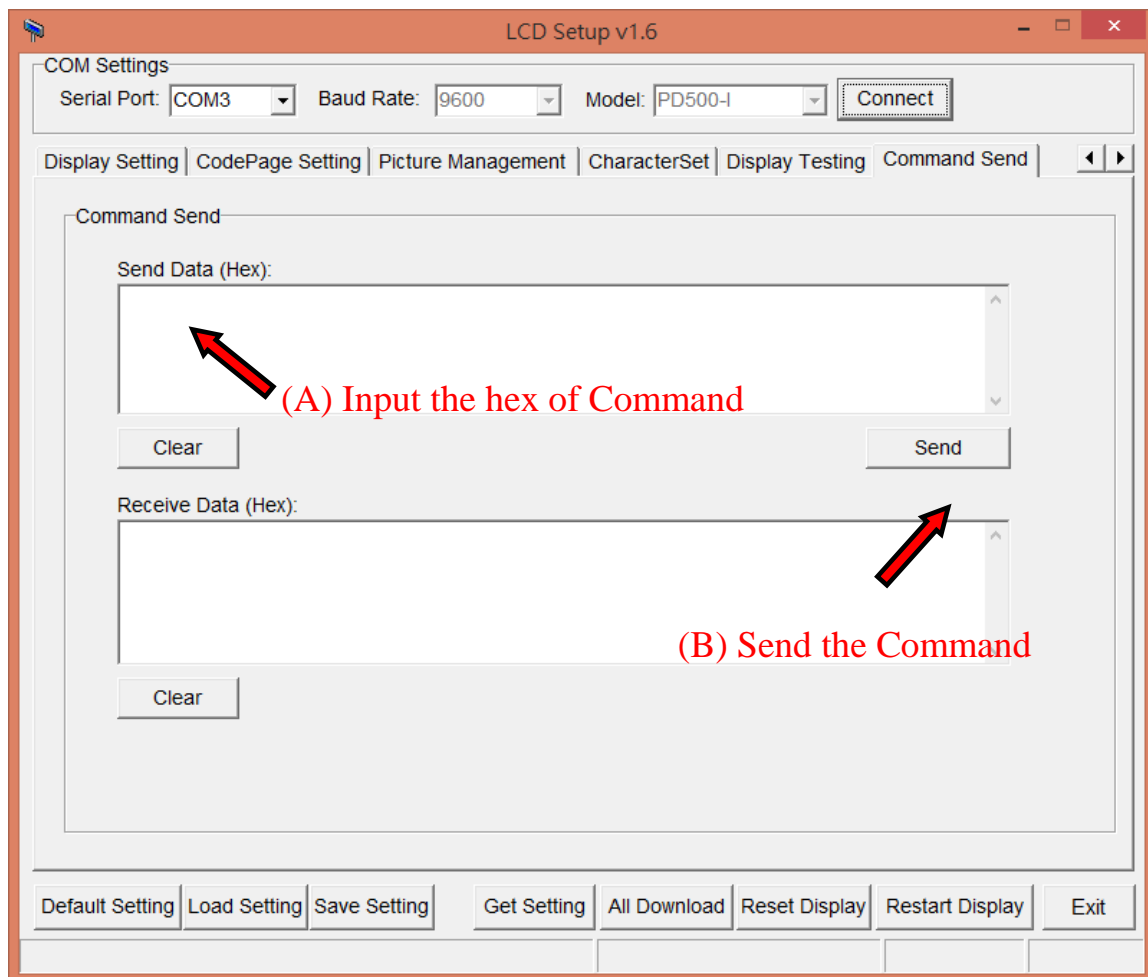
- Click on the **InterChar** radio button to Choose the Interchar.
- Click on the **Codepage** radio button to Choose the Codepage.
- Click on the **Download Setting** button to download to the display.

5. Display Testing



- a) Basic display test: Text display, blink, Text at display, Clear Display.
- b) Selected InterChar test: 0x20~0x7F.
- c) Selected Codepage test: 0x80~0xFF.

6. Command Send



- a) Input the hex of command.
- d) Click on the **Send button** to send command to the display.

7. Configuration and Parameter maintenance

COM Settings

Serial Port: COM3 Baud Rate: 9600 Model: PD500-I Connect

Basic Setting | Display Setting | CodePage Setting | Picture Management | CharacterSet | Display Testing | Comn

Baud Rate: 9600 Command Mode: AUTO

InterChar

- ☒ USA
- ☐ France
- ☐ Germany
- ☐ U.K.
- ☐ Denmark I
- ☐ Sweden
- ☐ Italy
- ☐ Spain
- ☐ Japan
- ☐ Norway
- ☐ Denmark II
- ☐ Slavonic
- ☐ Russia
- ☐ Greek
- ☐ Czech
- ☐ Lithuania
- ☐ Portugal
- ☐ Turkey
- ☐ Baltic States
- ☐ Thailand
- ☐ Other

CodePage: CP437

WelcomeMessage & Display Mode

Line 1: *** TFT DISPLAY ***

2A	2A	2A	20	54	46	54	20	44	49
53	50	4C	41	59	20	20	2A	2A	2A

Line 2: **HAVE A NICE DAY AND THANK YOU**

☒ Scroll

2A	2A	48	41	56	45	20	41	20	4E
49	43	45	20	44	41	59	20	41	4E
44	20	54	48	41	4E	4B	20	59	4F
55	2A	2A	20	20	20	20	20	20	20
20	20	20	20	20	20	20	20	20	20
20	20	20	20	20	20	20	20	20	20

Download Setting

Default Setting Load Setting Save Setting Get Setting All Download Reset Display Restart Display Exit

- Default Setting** : Restore the tool's setting to default.
- Load Setting** : Read settings from files.
- Save Setting** : Save settings to files.

8. Device Operations

COM Settings

Serial Port: COM3 Baud Rate: 9600 Model: PD500-I Connect

Basic Setting | Display Setting | CodePage Setting | Picture Management | CharacterSet | Display Testing | Comm

Baud Rate: 9600 Command Mode: AUTO

InterChar

☒ USA ☐ Sweden ☐ Denmark II ☐ Lithuania ☐ Other
☐ France ☐ Italy ☐ Slavonic ☐ Portugal
☐ Germany ☐ Spain ☐ Russia ☐ Turkey
☐ U.K. ☐ Japan ☐ Greek ☐ Baltic States
☐ Denmark I ☐ Norway ☐ Czech ☐ Thailand

CodePage: CP437

WelcomeMessage & Display Mode

Line 1: *** TFT DISPLAY ***

2A	2A	2A	20	54	46	54	20	44	49
53	50	4C	41	59	20	20	2A	2A	2A

Line 2: **HAVE A NICE DAY AND THANK YOU**

☒ Scroll

2A	2A	48	41	56	45	20	41	20	4E
49	43	45	20	44	41	59	20	41	4E
44	20	54	48	41	4E	4B	20	59	4F
55	2A	2A	20	20	20	20	20	20	20
20	20	20	20	20	20	20	20	20	20
20	20	20	20	20	20	20	20	20	20

Download Setting

Default Setting Load Setting Save Setting Get Setting All Download Reset Display Restart Display Exit

- Get Setting** : Read settings form the display.
- All Download** : Download all setting to the display, Does not contain pictures and font files.
- Reset Display** : Restore factory settings.
- Restart Display** : .Reboot the display.